



City of Wausau

# RESIDENTIAL DEVELOPMENT OPPORTUNITY

## Featuring:

Single-family residential infill parcel in well established residential neighborhood. Desirable lot with nearby amenities including schools and parks.



## 921 South 19<sup>th</sup> Avenue (City owned)



### Property Profile:

7,800 square feet (.179 acres)

SR-5 zoning (single-family residential)

17 feet - minimum front yard setback\*

8 feet - minimum side setback\*

25 feet - minimum rear yard setback\*

55% maximum impervious surface area ratio (no pavement or building)

800 square foot minimum dwelling unit size/200 square foot garage minimum

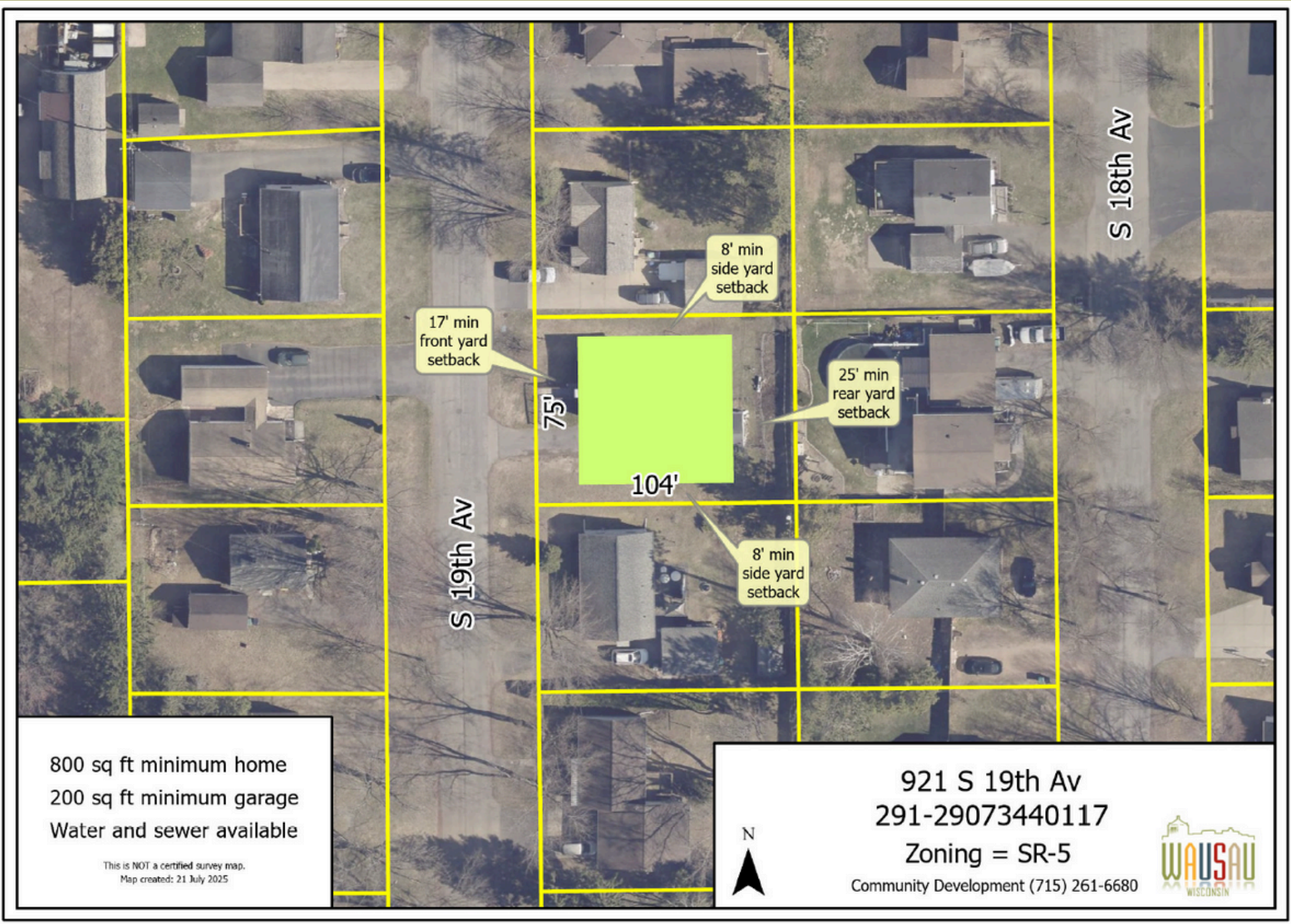
City utilities

\*minimum distance from the lot line to the home

**Desired Use:**

Residential

Occupant must meet HUD income guidelines



**Contact Information:**

Tammy Stratz, Community Development Manager

Randy Fifrlick, Development Director

[wausaudevelopment@wausauwi.gov](mailto:wausaudevelopment@wausauwi.gov)

715-261-6680